

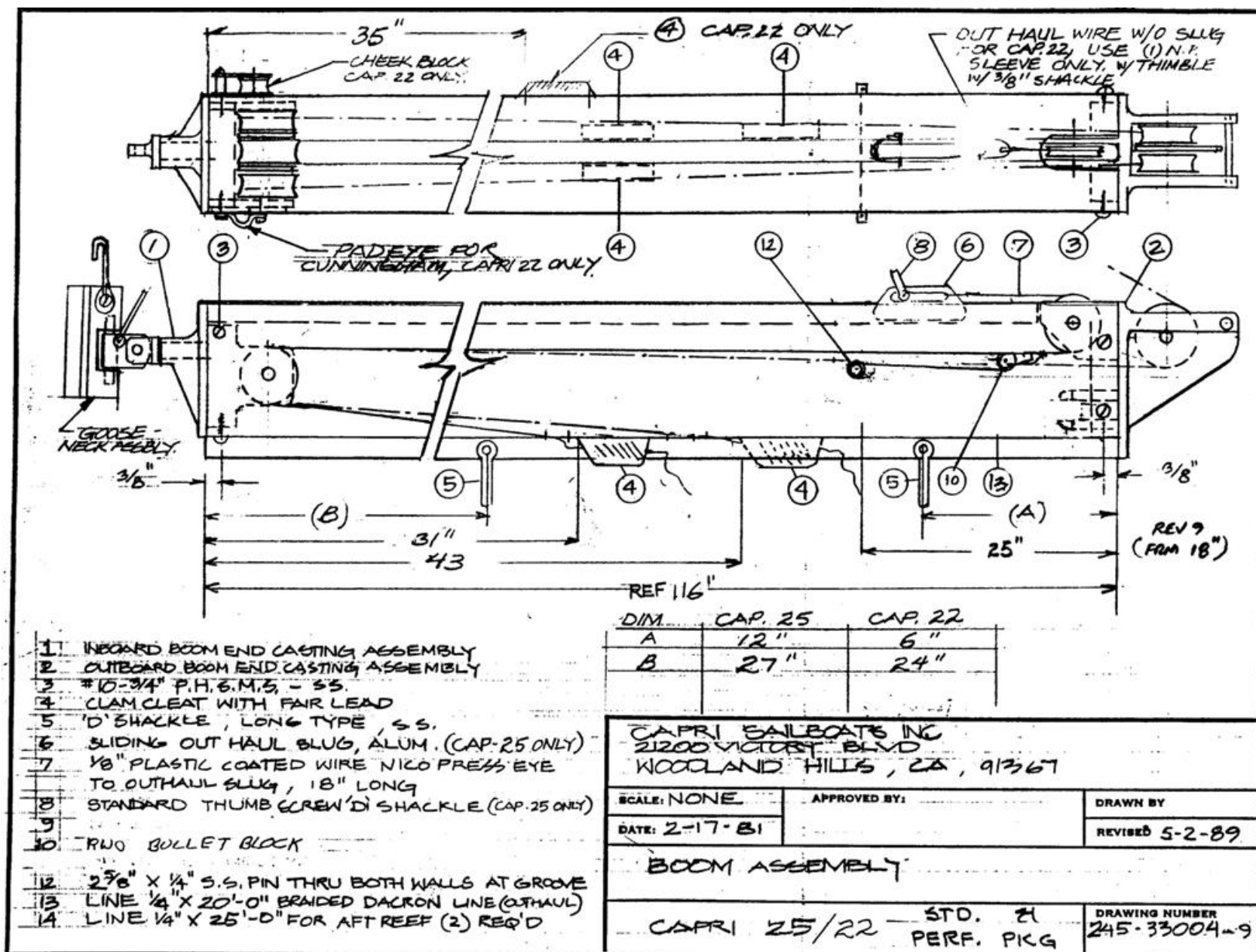
# **Selected Architectural Drawings**

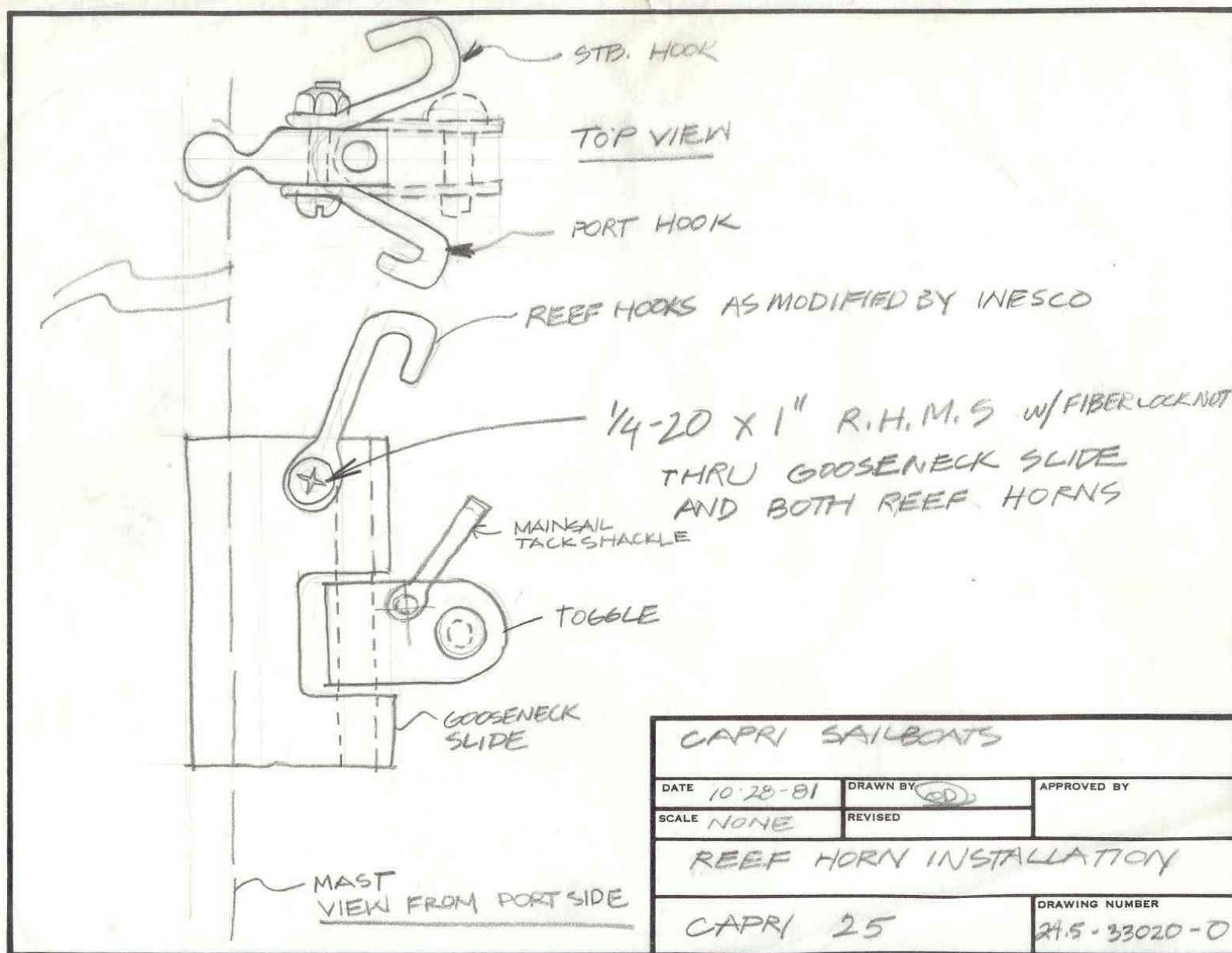
## **CAPRI 25**

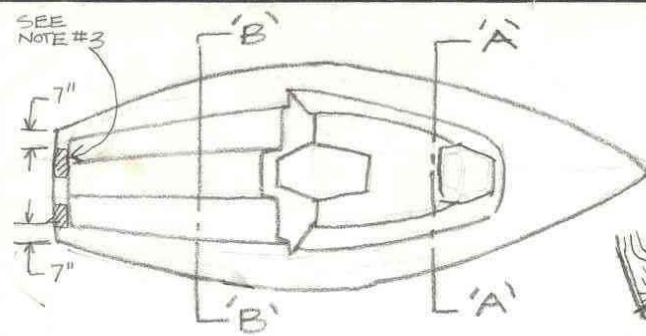


# Table of Contents

Boom Assembly	4
Boom Gooseneck	5
Deck Lamination	6
Keel Attachment Detail	7
Keel Joint Repair	8
Lifting Bracket Dimension	9
Lifting Bracket Detail	10
Lifting Harness Detail	11
Spreader Section	12
Spreader Bracket	13
Hull Lamination	14
Deck to Hull Joint	15
Mast Section	16







### STEP ONE

- (A) 15 OZ MATT
- (B) 7.5 OZ CLOTH

### STEP TWO

- (C) .75 OZ MATT
- (D) 4 MM CORE MATT
- (E) 4 MM CORE MATT
- (F) .75 OZ MATT
- (G) 7.5 OZ CLOTH

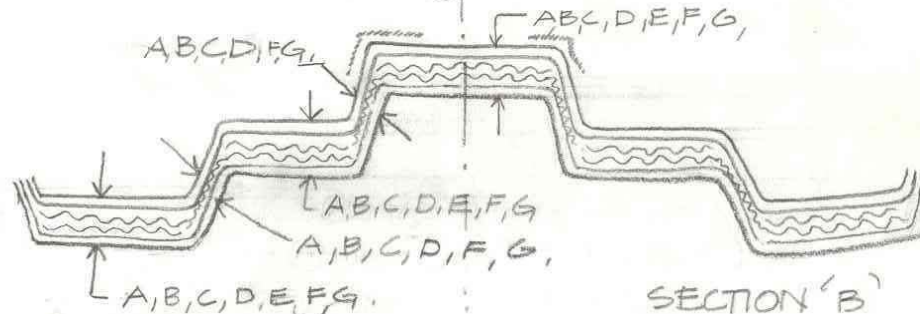
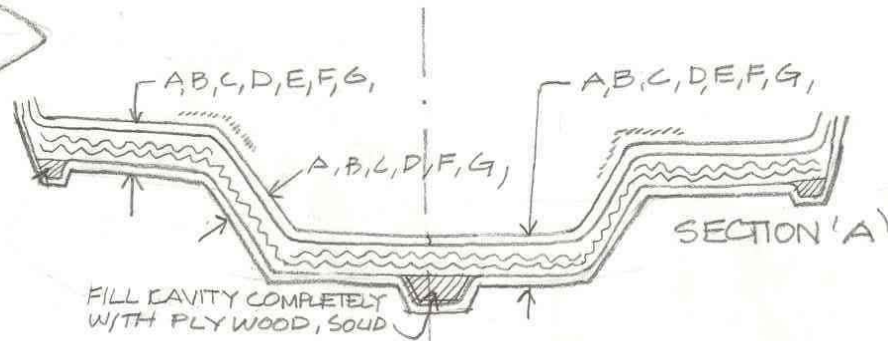
### STEP THREE

- (H) 21.7 OZ ROVING TAPE 4" WIDE  
LOCAL REINFORCEMENT @ -  
1) STANCHION AND PULPIT BASES 4" x 6"  
2) WINCHES (2) - 4" x 6"  
3) INBOARD GENOA TRACKS (2) 4" x 24" (2) 4" x 48"

(3) 1" x 6" BRASS BAR IN DECK FOR STERN RAIL P+S.

(2) AFT CABIN BULKHEAD LAMINATE - A,B,C,D,E,F,G,

NOTES (1) WET OUT CORE MATT THOROUGHLY FOR COMPLETE EXPANSION



- (H) CONT'D  
4) 4" ROVING 21.7 OZ @ PERIMETER OF COCKPIT  
SEAT HATCHES  
5) 4" ROV AT C/PIT FLOOR AND TRUNK CABIN BASE AT DECK

CAPRI SAILBOATS INC

SCALE: NONE

APPROVED BY:

DRAWN BY GP

DATE: 9.28.79

REVISED 1-15-80

DECK LAMINATE SCHEDULE

8-12-80

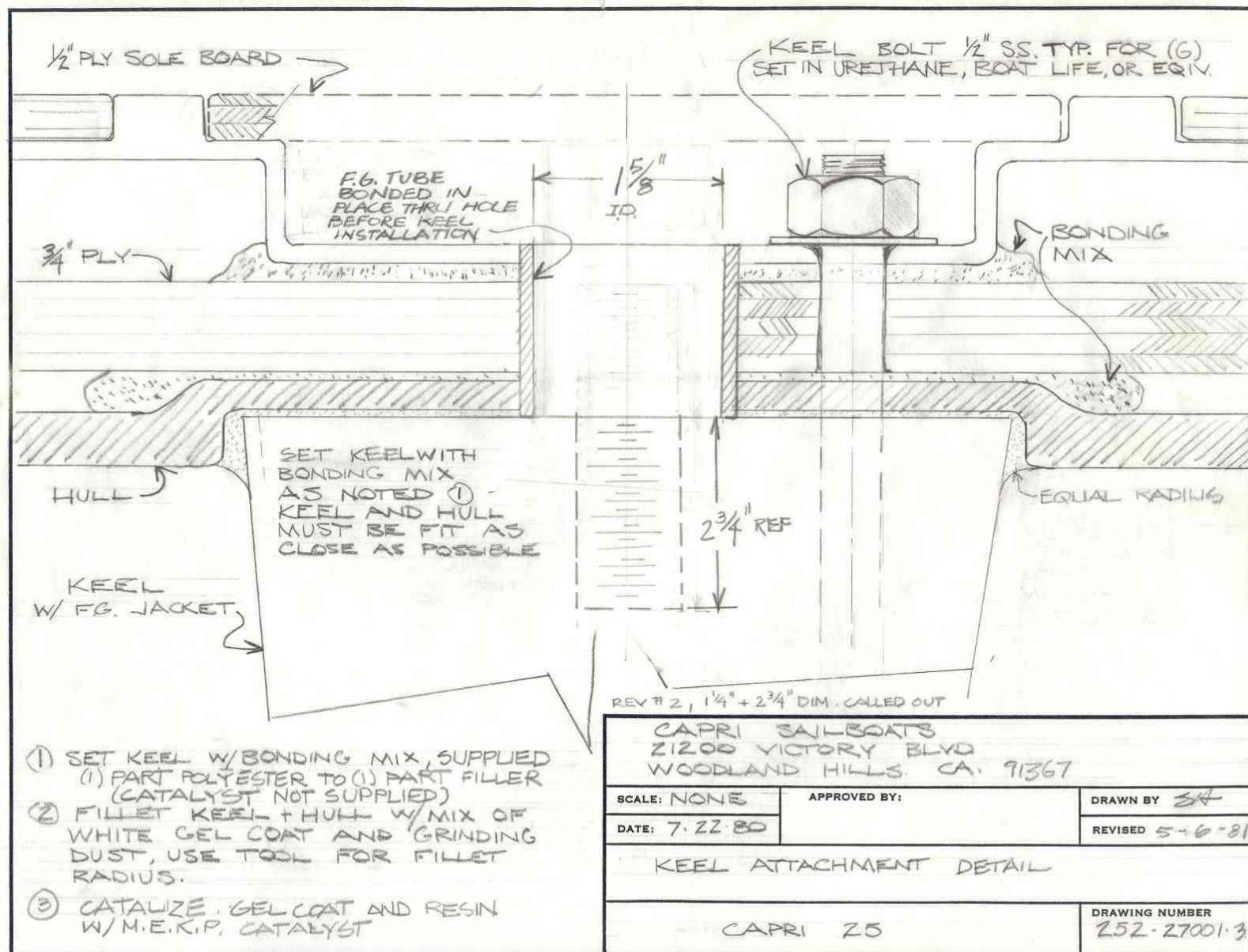
1-20-82-3

CAPRI 25

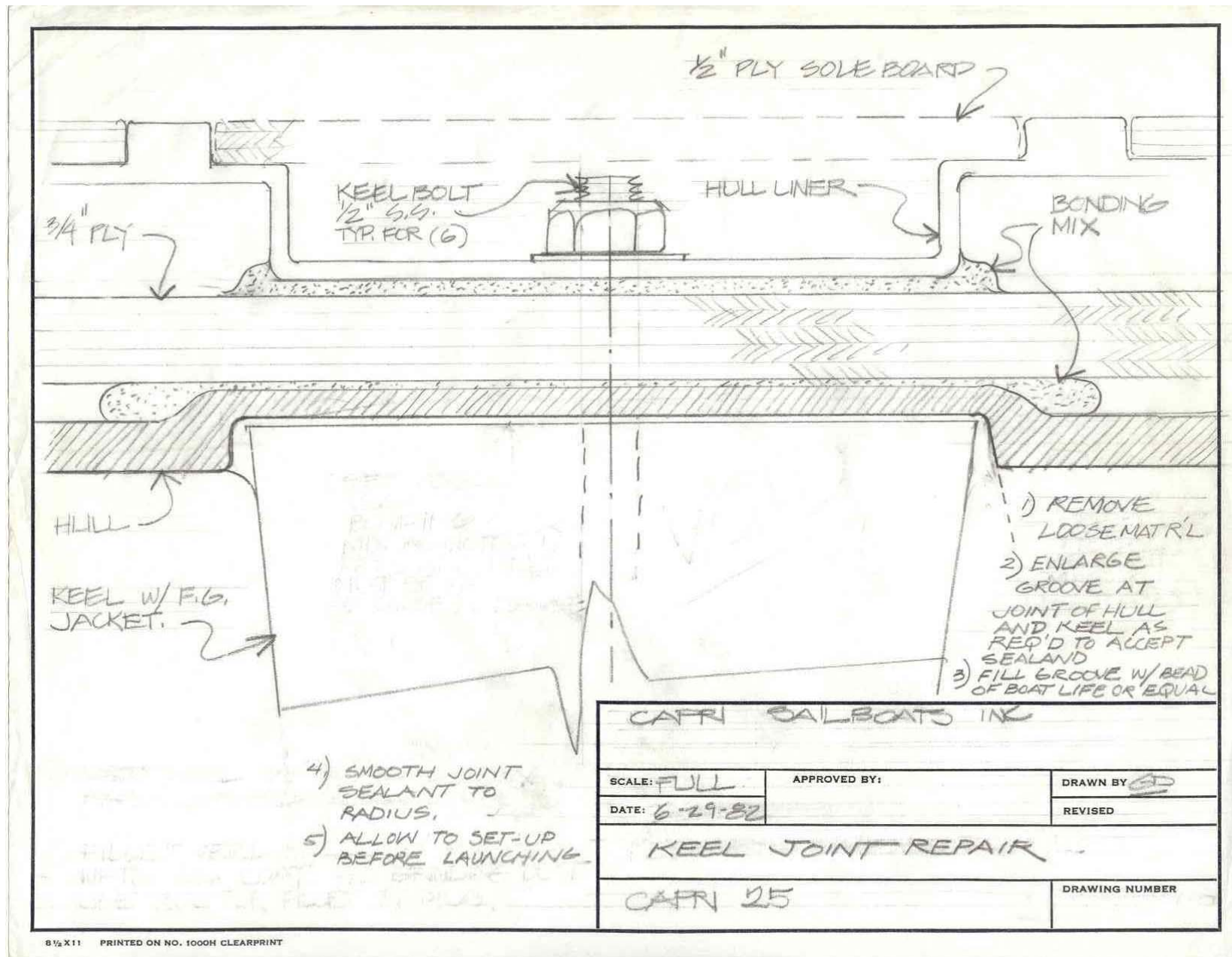
DRAWING NUMBER

-3



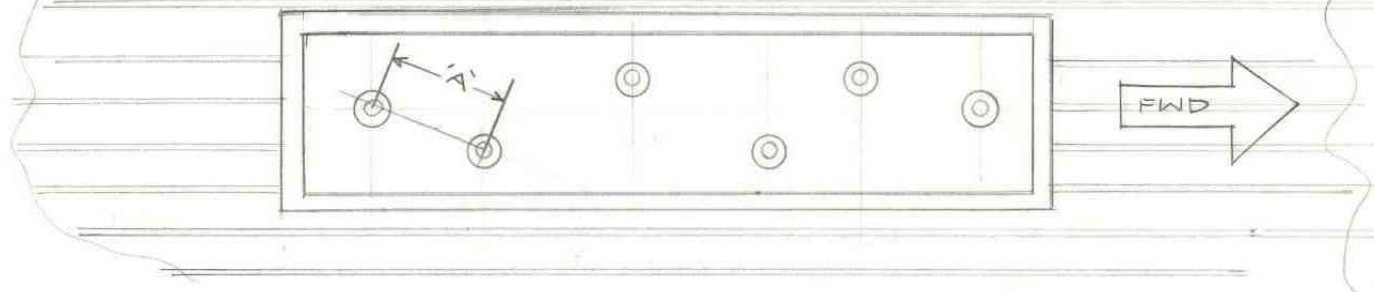


8 1/2 X 11 PRINTED ON NO. 1000H CLEARPRINT

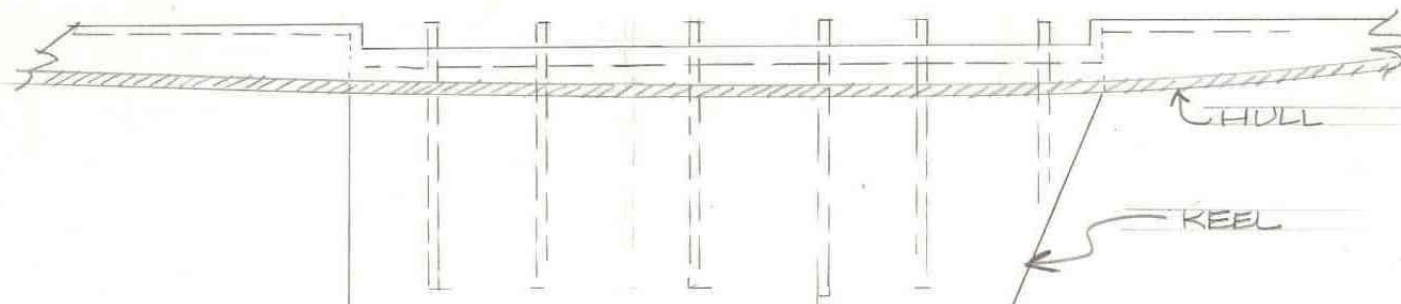




- 1) MEASURE DISTANCE BETWEEN CENTER OF (2) AFT KEEL BOLTS
- 2) FILL OUT THE INFORMATION REQUESTED AT THE BOTTOM OF THIS DWG
- 3) RETURN THIS DRAWING TO THE FACTORY



TOP VIEW OF KEEL BOLTS



DIMENSION 'A'

CAPRI 25 HULL #

SEND LIFTING SLING BRACKET TO:

\_\_\_\_\_  
 \_\_\_\_\_  
 \_\_\_\_\_

CAPRI SAILBOATS INC

SCALE: NONE

APPROVED BY:

DRAWN BY GP

DATE: 9-25-80

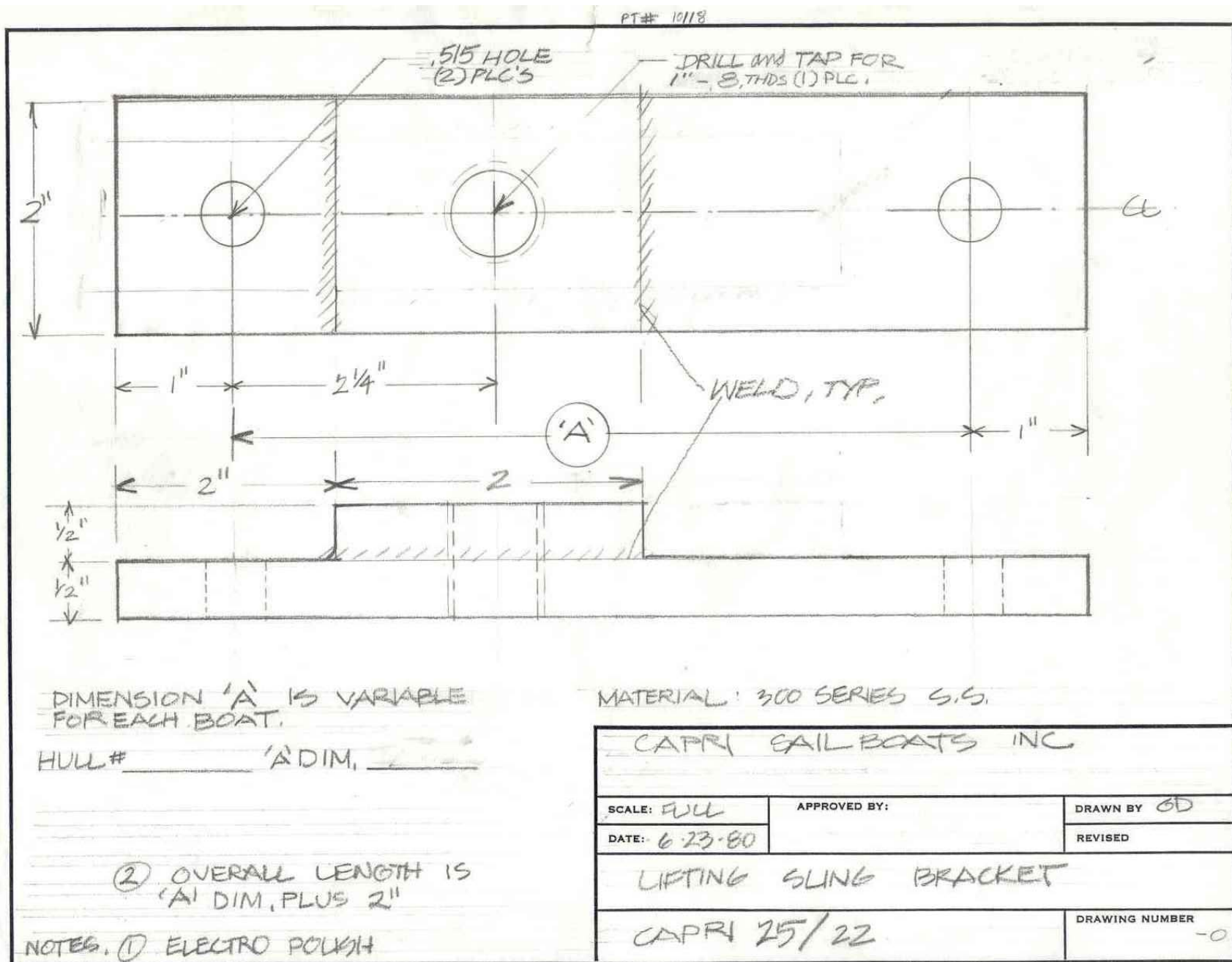
REVISED

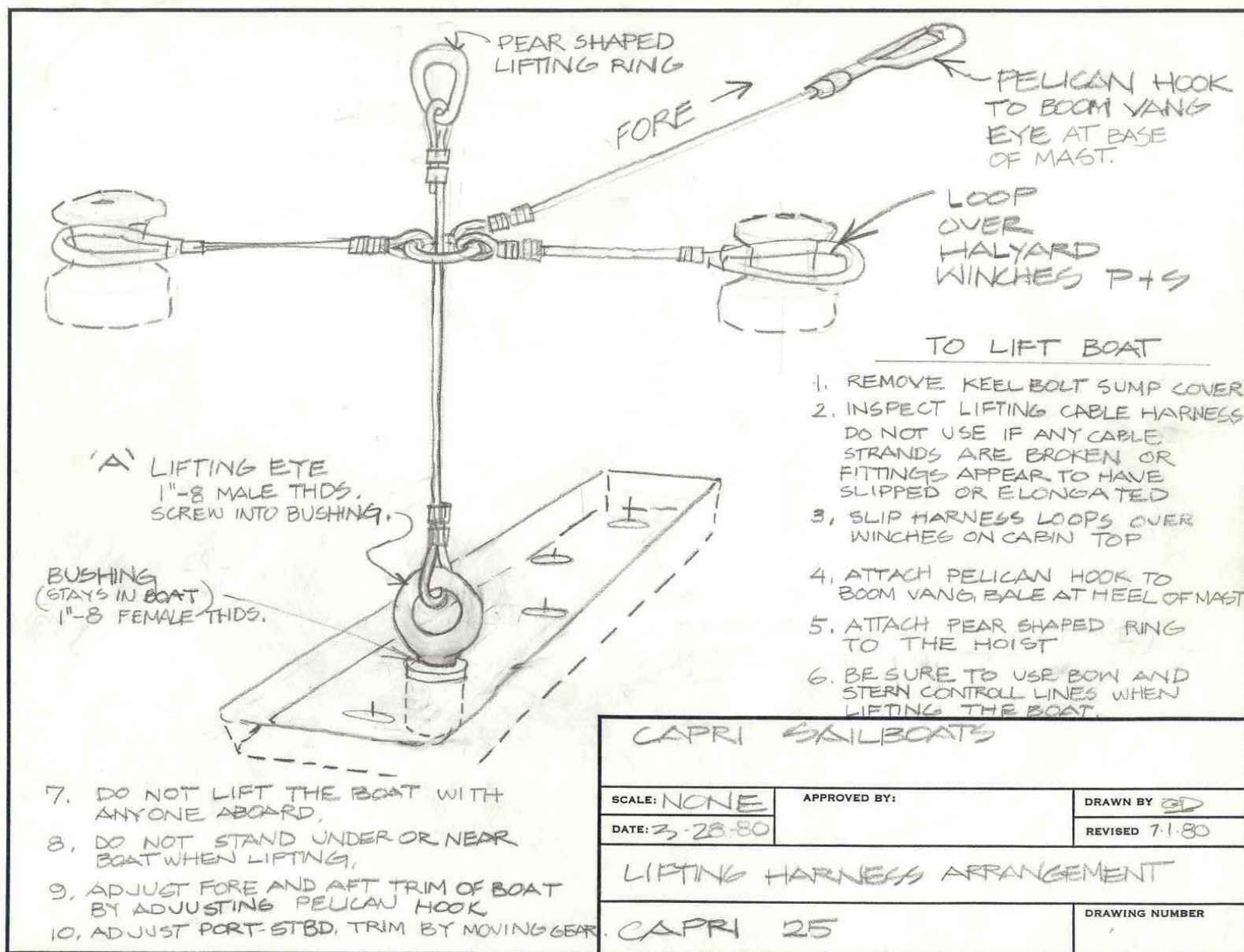
LIFTING SLING BRACKET DIMENSION

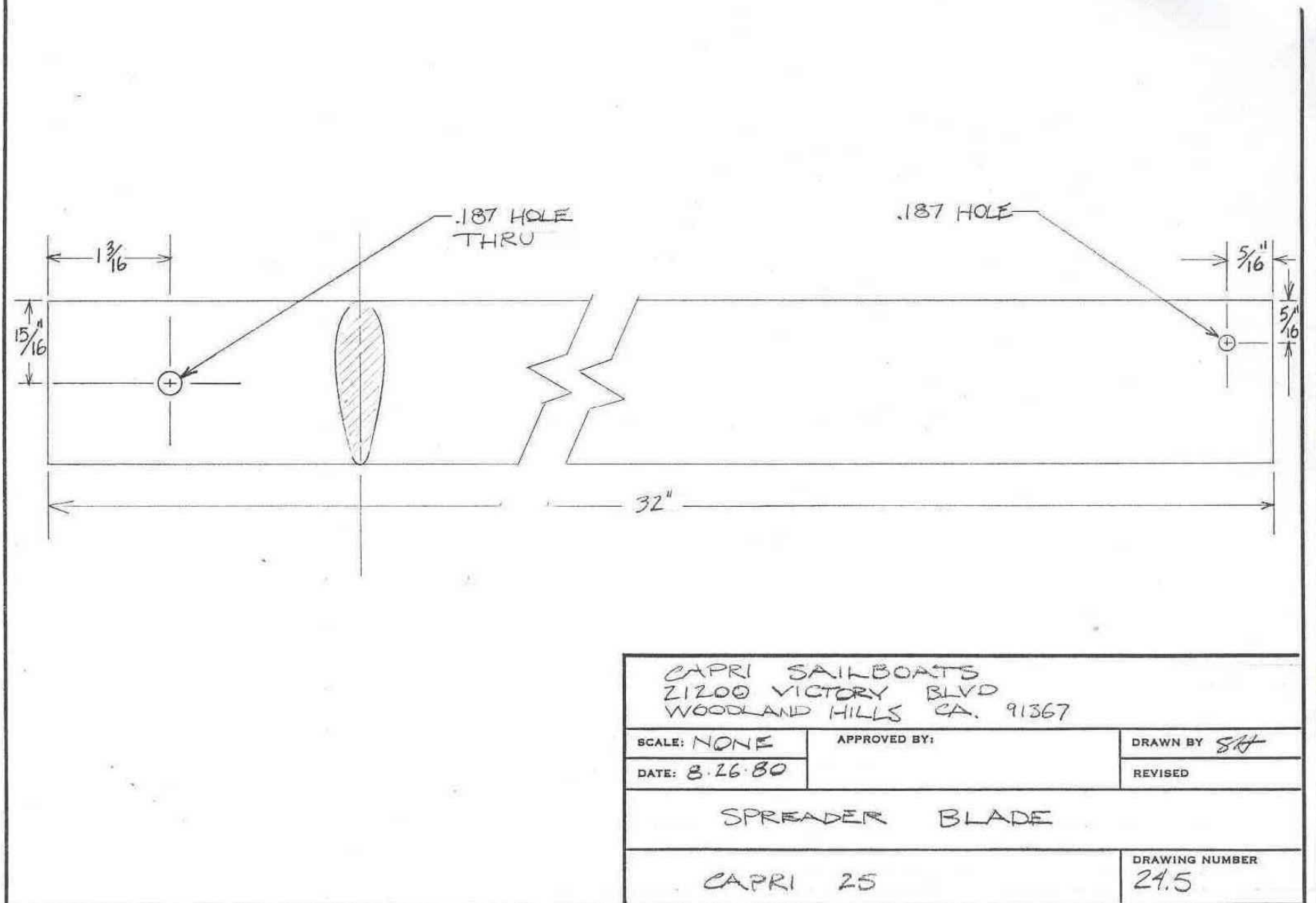
CAPRI 25 / 22

DRAWING NUMBER

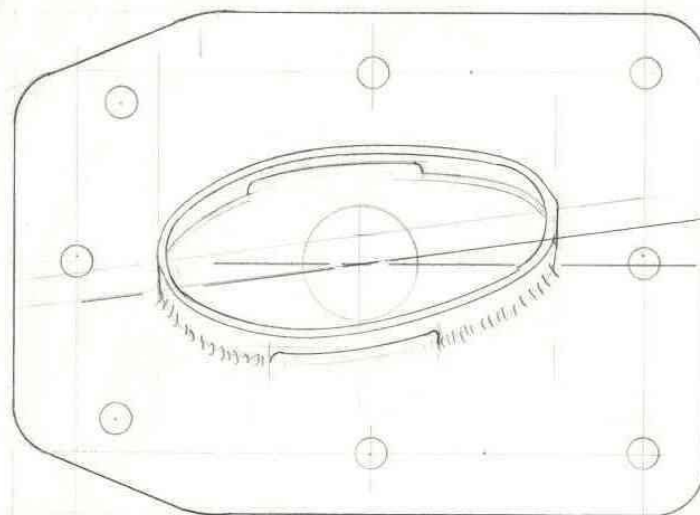
-1







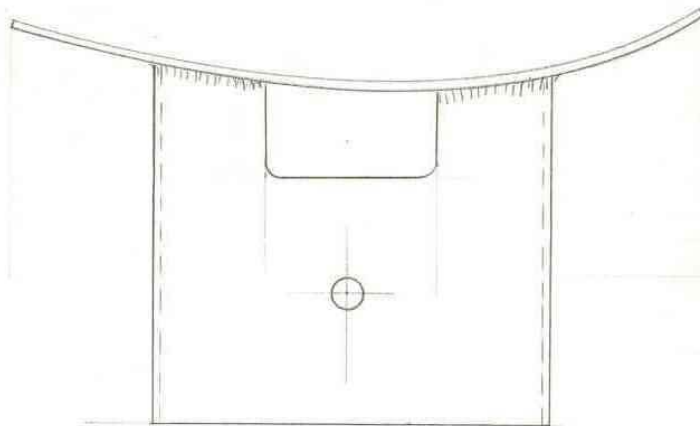




8°



5°



CATALINA YACHTS INC.  
21200 VICTORY BLVD.  
WOODLAND HILLS CA. 91367

SCALE: FULL

APPROVED BY:

DRAWN BY

SAH

DATE:

REVISED

SPREADER SOCKET

CAPRI '25'

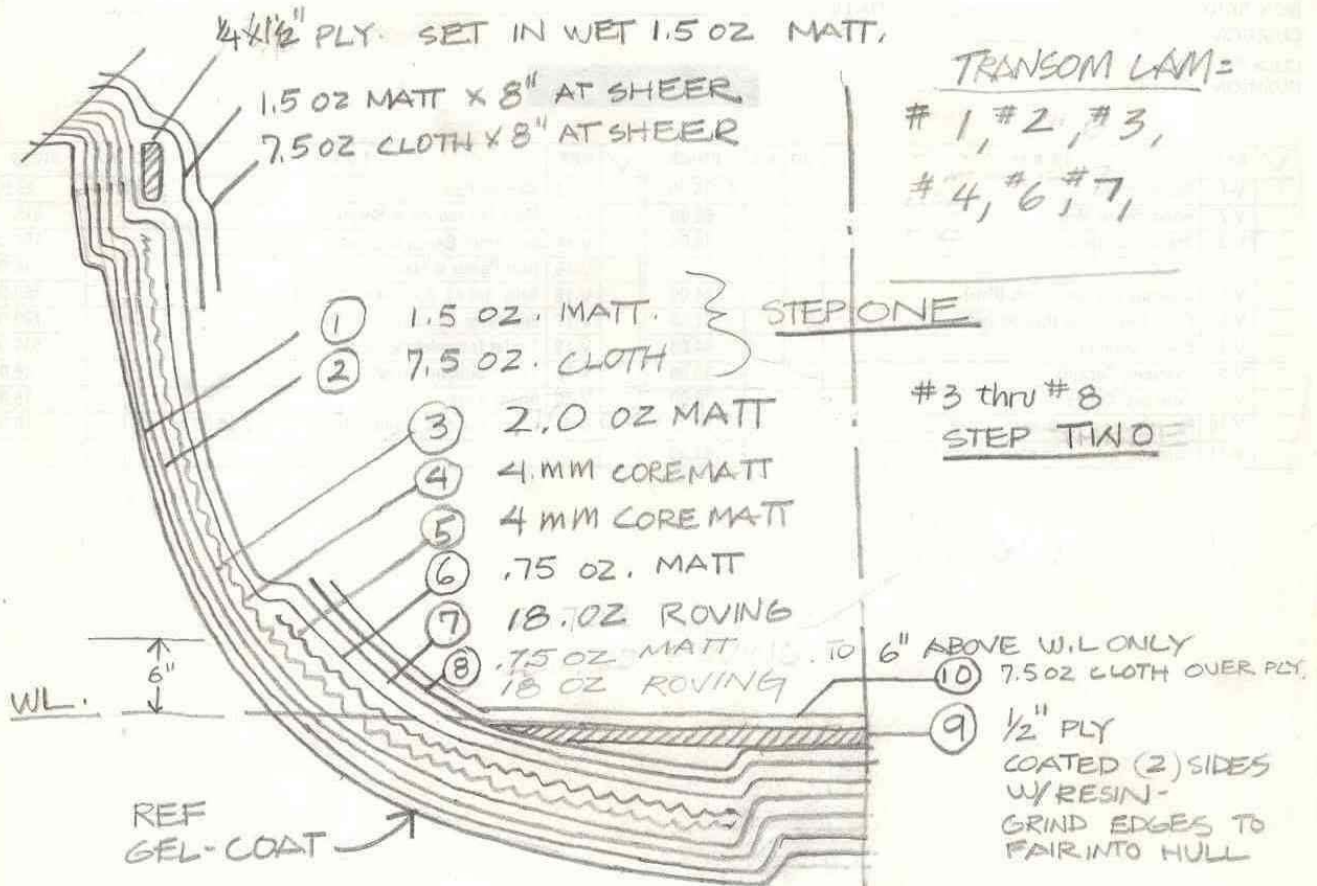
DRAWING NUMBER



CAPRI 25-

HULL LAMINATE - 9-27-79

REV - 7-29-82



NOTE ① COREMATT MUST HAVE EVEN AND THROUGH RESIN PENATRATION

② DO NOT OVERLAP COREMATT AT JOINTS - BUTT JOINTS.

③ 6" OVERLAP # 7 and # 8 ON CENTERLINE.

# 9 AND 10

STEP THREE

- BEFORE LINER
- DRY RUN LINER BEFORE GLASSING IN PLY.
- WOOD MUST BE FLAT ON KEEL BOSS

DWG. #

245-12001-1

REV. 7-29-82

# 3 WAS .75 OZ

# 7+8 WAS 21.7 OZ

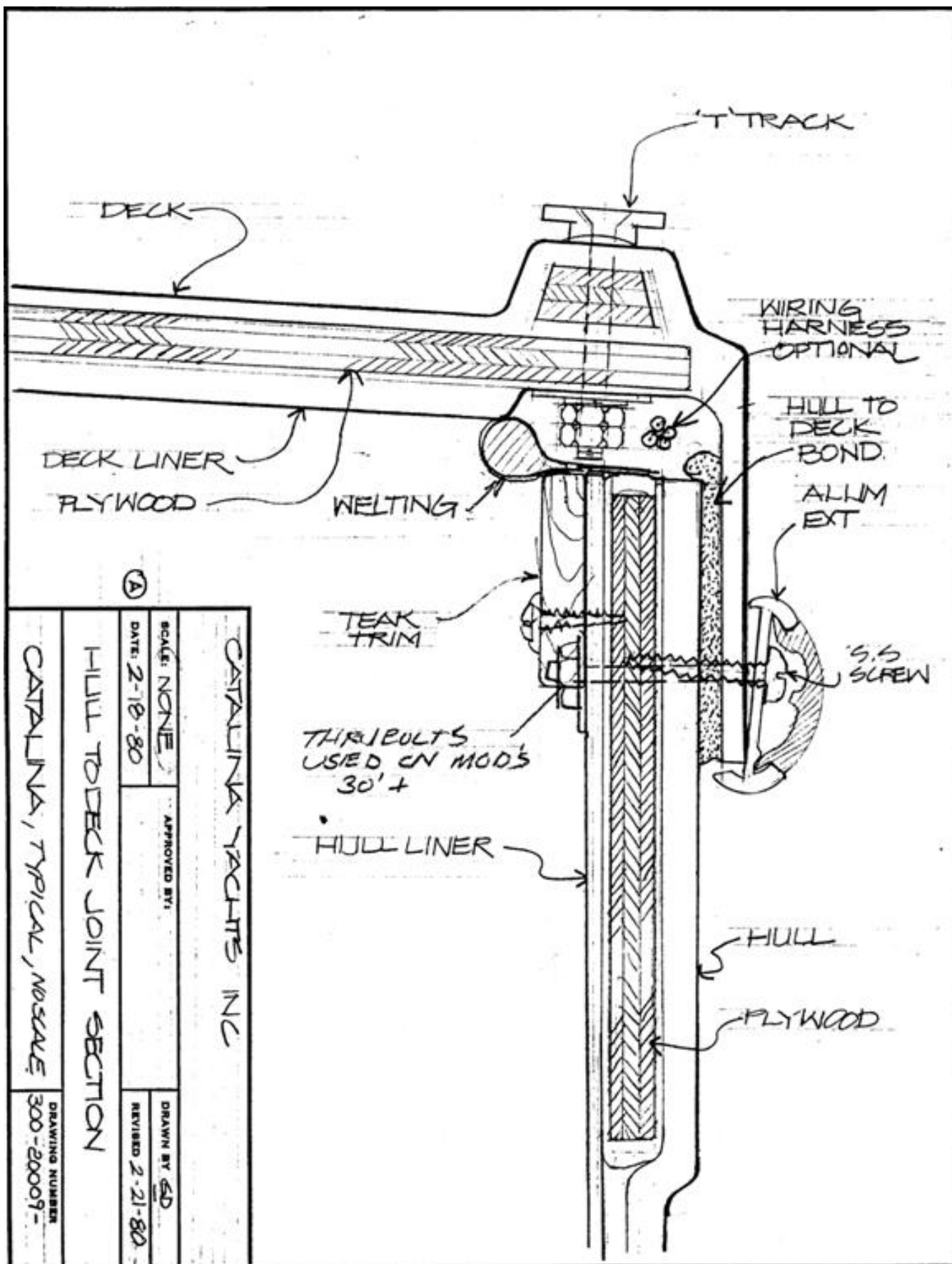


Figure 25 Selected Architectural Drawings

